

THIS DRAWING IS UNPUBLISHED. RELEASED FOR PUBLICATION
 © COPYRIGHT BY TYCO ELECTRONICS CORPORATION. ALL RIGHTS RESERVED.

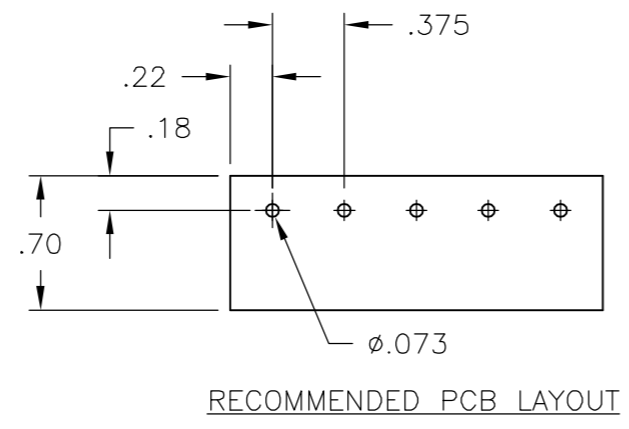
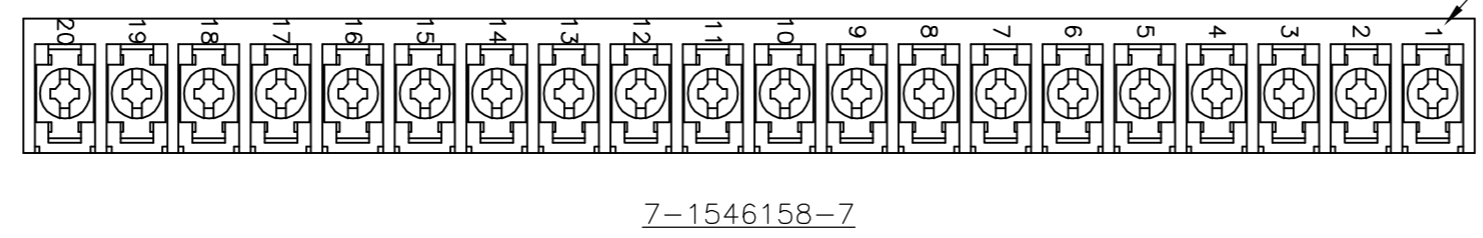
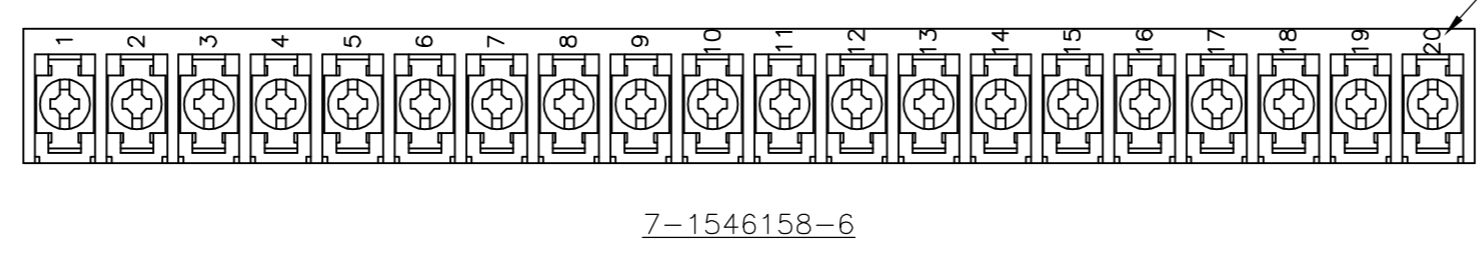
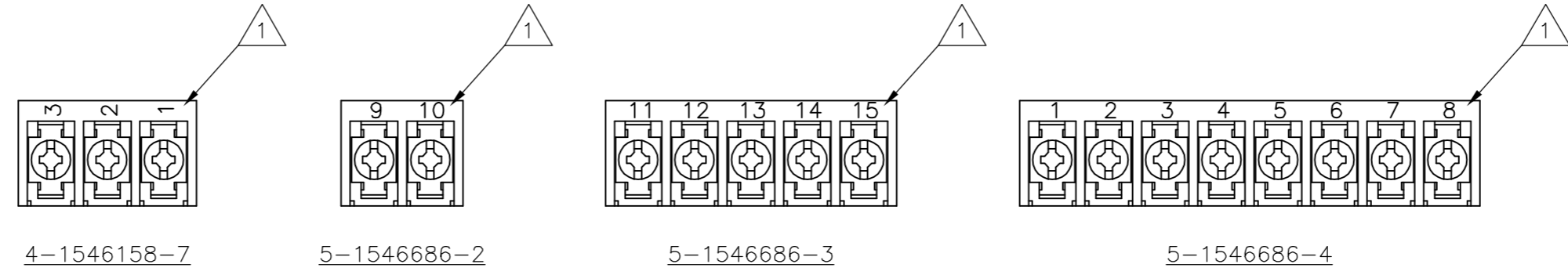
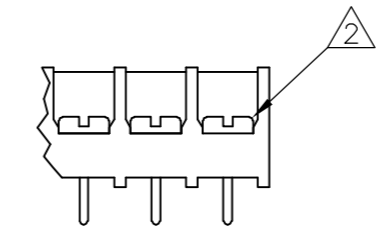
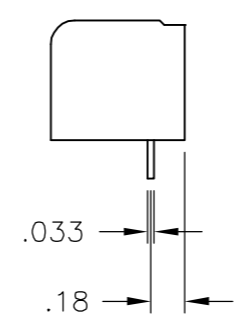
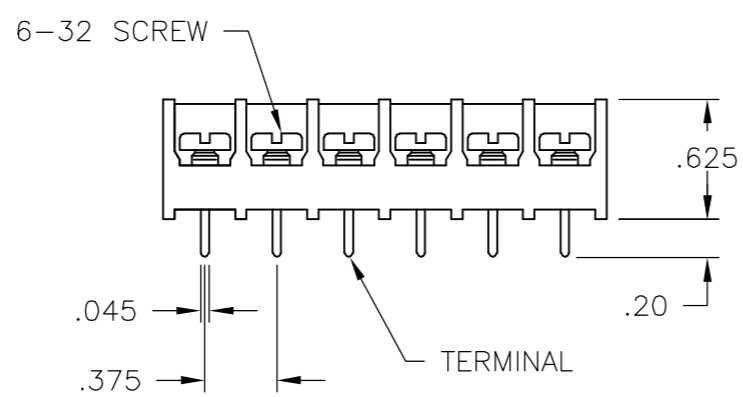
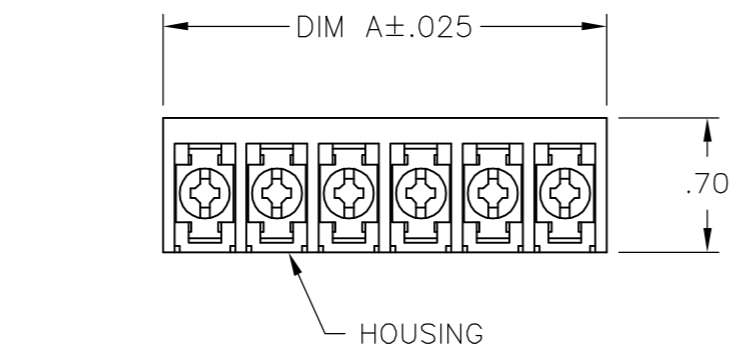
LOC	DIST	REVISIONS					
FT	0	P	LTR	DESCRIPTION	DATE	DWN	APVD
		B5		REVISED PER ECO-07-002995	2/8/07	SS	SRY

MATERIAL:
 HOUSING: THERMOPLASTIC, UL94V-0 BLACK.
 TERMINALS: BRIGHT TIN PLATED, COPPER ALLOY.
 SCREWS: 6-32, STEEL, ZINC PLATED WITH CLEAR CHROMATE.
 UNLESS OTHERWISE NOTED.

ELECTRICAL:
 RATED CURRENT UL/CSA:
 CLASS C: 25A, 300V.
 CLASS D: 5A, 600V.
 WIRE RANGE: 12-22 AWG

MECHANICAL:
 RECOMMENDED TIGHTENING TORQUE: 7 IN.-LBS.
 OPERATING TEMP.: 105°C MAX

- ▲ MARK WITH WHITE PERMANENT INK.
- ▲ ALL SCREWS TO BE DRIVEN DOWN TO TERMINAL SURFACE.
- ▲ STAINLESS STEEL SCREWS.
- ▲ NICKEL PLATED BRASS SCREWS.
- ▲ PRELIMINARY PART NUMBER.



	DIM A	NO OF POS	CATALOG NUMBER	TYCO PART NO
11.311	30		6PCV-30-007	8-1546158-7
OBSOLETE	11.311	30	6PCV-30-007	1546814-2
10.936	29		6PCV-29-007	1546814-1
10.561	28		6PCV-28-007	2-1546686-1
10.186	27		6PCV-27-007	2-1546686-0
9.811	26		6PCV-26-007	8-1546158-4
9.436	25		6PCV-25-007	1-1546686-9
9.061	24		6PCV-24-723	3-1437654-8
9.061	24		6PCV-24-007	8-1546158-3
8.686	23		6PCV-23-007	1-1546686-8
8.311	22		6PCV-22-007	1-1546686-7
7.936	21		6PCV-21-007	1-1546686-6
7.561	20		6PCV-20-720	2-1437654-7
7.561	20		6PCV-20-1360	7-1546158-7
7.561	20		6PCV-20-1359	7-1546158-6
7.561	20		6PCV-20-007	7-1546158-3
7.186	19		6PCV-19-007	1-1546686-5
6.811	18		6PCV-18-1390	1546262-5
6.811	18		6PCV-18-007	1437654-8
6.436	17		6PCV-17-1206	1437654-1
6.436	17		6PCV-17-007	1-1546686-4
6.061	16		6PCV-16-719	9-1437653-4
6.061	16		6PCV-16-007	8-1437653-1
5.686	15		6PCV-15-993	7-1437653-6
5.686	15		6PCV-15-007	7-1437653-5
5.311	14		6PCV-14-1205	7-1437653-0
5.311	14		6PCV-14-007	6-1437653-7
4.936	13		6PCV-13-1194	6-1437653-5
4.936	13		6PCV-13-007	6-1546158-7
4.561	12		6PCV-12-718	5-1437653-8
4.561	12		6PCV-12-007	5-1437653-2
4.186	11		6PCV-11-007	1-1546686-3
3.811	10		6PCV-10-003	6-1546158-1
3.811	10		6PCV-10-1193	3-1437653-8
3.811	10		6PCV-10-007	3-1437653-6
3.436	9		6PCV-09-003	5-1546686-5
3.436	9		6PCV-09-1270	2-1437653-8
3.436	9		6PCV-09-007	2-1437653-6
3.061	8		6PCV-08-1397	5-1546686-4
3.061	8		6PCV-08-717	1-1437653-9
3.061	8		6PCV-08-007	1-1437653-4
2.686	7		6PCV-07-007	1437653-8
2.311	6		6PCV-06-716	1437653-1
2.311	6		6PCV-06-007	9-1437652-6
1.936	5		6PCV-05-1396	5-1546686-3
1.936	5		6PCV-05-1341	8-1437652-6
1.936	5		6PCV-05-007	5-1546158-1
1.561	4		6PCV-04-715	7-1437652-5
1.561	4		6PCV-04-007	6-1437652-8
1.186	3		6PCV-03-1256	4-1546158-7
1.186	3		6PCV-03-003	1546119-2
1.186	3		6PCV-03-007	5-1437652-5
.811	2		6PCV-02-1395	5-1546686-2
.811	2		6PCV-02-1339	4-1437652-6
.811	2		6PCV-02-007	4-1437652-0

THIS DRAWING IS A CONTROLLED DOCUMENT.		DWN S SCHLEGEL 23APR03	Tyco Electronics Corporation Harrisburg, Pa 17105-3608	
DIMENSIONS: INCHES		CHK S YODER 4/23/04		
TOLERANCES UNLESS OTHERWISE SPECIFIED:		APVD S YODER 4/23/04	NAME 6PCV-XX-007 ASSEMBLY	
0 PLC ± - 1 PLC ± - 2 PLC ± .01 3 PLC ± .005 4 PLC ± - ANGLES ± 1°		PRODUCT SPEC -	RESTRICTED TO -	
MATERIAL -		APPLICATION SPEC -	SIZE A2	CAGE CODE 00779
FINISH -		WEIGHT -	DRAWING NO C=4-1437652-0	
		CUSTOMER DRAWING	SCALE NTS	SHEET 1 OF 1
				REV B5